



PAN PACIFIC  
LONDON

Sincerely Yours

# Welcoming the epitome of modern luxury

A modern urban retreat located at Bishopsgate Plaza  
in the heart of the City of London and moments from  
Liverpool Street Station, Pan Pacific London  
combines sincere Singaporean hospitality  
with contemporary London design.



194

ROOMS

43

SUITES

10

EVENT  
SPACES

2

PRIVATE  
DINING ROOMS

5

RESTAURANTS  
& BARS

Welcome to Pan Pacific London.

Our purpose is to bring a little slice of the Singapore experience to London, hopefully evoking a feeling of nostalgia in those who have already travelled to this region and a desire to visit in those who haven't yet been. Our style, ethos and menus take inspiration from our Asian heritage through warm, gracious hospitality and luxurious service combined with the stunning views and cultural discoveries here in the heart of the City of London.

The following pages give a sneak peek of what we have to offer and I very much hope that you will have the opportunity to experience Pan Pacific London in person. Whether staying with us or visiting, I look forward to seeing you at the hotel to enjoy our rooms, our destination restaurants and bars, our wellbeing floor with infinity pool, and our range of meetings and events spaces including the Pacific Ballroom.

Sincerely yours,

*Anne*

**ANNE GOLDEN**

General Manager













## GEORGE YABU & GLENN PUSHELBERG



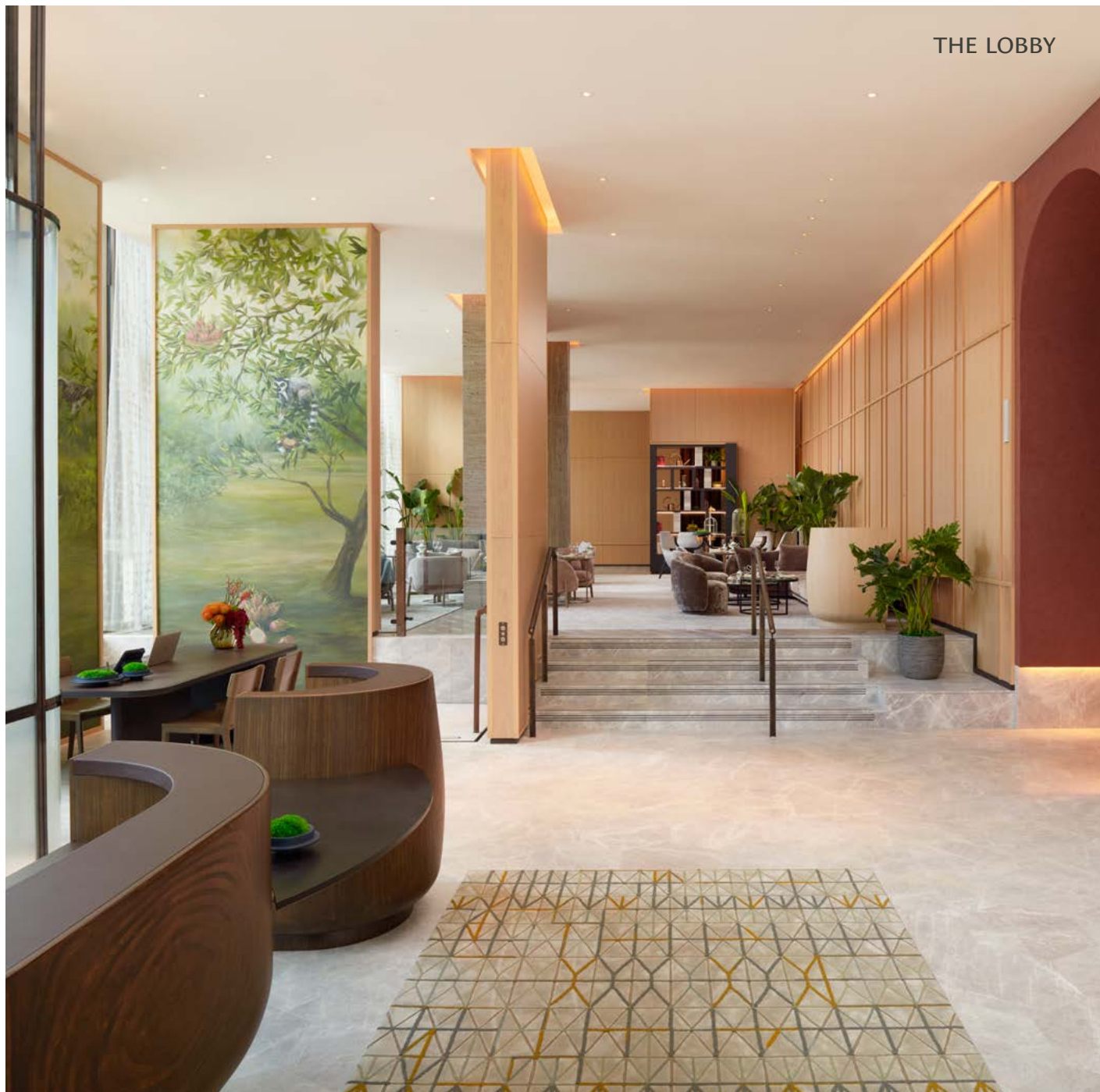
A new statement hotel designed by New York based duo Yabu Pushelberg, our hotel appeals to city workers and urban explorers with a slew of world-class amenities.

Epitomising the juxtaposition of old and new London architecture, Bishopsgate Plaza encapsulates not only a 43-storey bronze tower, encompassing Pan Pacific London and private luxury residential apartments, but also the century-old Devonshire House, featuring designer shops, a destination restaurant and our very own contemporary cocktail bar. A landscaped public plaza seamlessly connects these two cultural hubs together, making it a 24-hour destination for meeting, living, working and discovering.

Our design feeds off the richness and history of London while layering in the contemporary cool and free-spirited energy of South East Asia.

GEORGE YABU

THE LOBBY





PAN PACIFIC SUITE







DELUXE ROOM CITY VIEW







---

## A place to rest your head

Arrive, relax and enjoy tailored modernity with an Asian artistic flair in our spacious rooms or luxuriously elegant suites with butler service.

With commanding views across the City of London, everything is designed with your comfort in mind at Pan Pacific London. All rooms feature king beds, expansive marble bathrooms, and first class exclusive Diptyque and Dyson in-room amenities.

# Sip, Dine & Savour

---

## Straits Kitchen

A thoughtful and respectful approach based on heritage recipes, our restaurant showcases a melting pot of cuisines from Singapore's many cultures where traders and neighbours have brought ingredients into Singapore through the Straits of Malacca.

Using pure Asian ingredients sourced and grown locally to minimise our carbon footprint, the team headed up by Executive Chef, Lorraine Sinclair and Singaporean Group Executive Chef, Tony Khoo, bring authentic spicy flavours to the table.

Straits Kitchen is open daily for breakfast, lunch and dinner and features floor-to-ceiling glass windows with sweeping views of Bishopsgate Plaza.





## Private Dining

Straits Kitchen is home to two private dining rooms - Newton and Katong - which are ideal for intimate special occasions, celebrations, corporate events, or informal business meetings incorporating working breakfasts, lunches and dinners.

Named after the straits surrounding Singapore, Newton seats up to 12 guests at its asymmetrical designed table whilst Katong, with a central captain's table, can accommodate up to 14 people. These dynamic and social spaces are surrounded by wooden panelling and beautiful murals. Pan Pacific London's culinary team have created seasonal menus with a focus on Asian ingredients, offering traditional and signature dishes that can be prepared per person or family-style sharing which is synonymous to Singapore dining.

---

## The Orchid Lounge

Relish in the ritual of afternoon tea in our sumptuous and serene living room evoking the timeless glamour of tradition.

Award-winning Executive Pastry Chef, Cherish Finden, has curated two seasonal collections not found anywhere else in the capital. The first showcases traditional delights of quintessentially British sandwiches, scones and patisserie, whilst Kopi Tiam, a Singaporean-inspired offering, celebrates bao, dim-sum and choux. Artistic and delightful, Pan Pacific London's afternoon tea is accompanied by the rarest teas introduced by our Tea Connoisseur, as well as world-renowned English sparkling wines.

With views over the Plaza, a beautifully landscaped cultural hub, the scene is set for a wonderful afternoon to sip, savour and enjoy.









## SHIOK!

Located on the ground floor in Devonshire House, SHIOK! is our patisserie spearheaded by Executive Pastry Chef Cherish Finden.

SHIOK! is a fun and modern expression used in Singapore that conveys a feeling of sheer pleasure and happiness when something is thoroughly enjoyable and simply amazing, just like our pastries.





## Ginger Lily

Bottling the buzz and excitement of Singaporean bar culture for London, Ginger Lily is a luxe bar for work and play.

The lively bar offers an extensive Champagne list and the carefully-curated cocktail menu showcases an eclectic mix of signature Singaporean classics and contemporary creations, mixed and muddled by our very own experts.





---

## Silverleaf

Located in Devonshire House, part of Pan Pacific London's estate, Silverleaf is one of the first independent cocktail bars to be part of a luxury hotel offering.

Dedicated to giving our guests a full sensory experience, the design of the bar by Tom Dixon is inspired by naturalism and its elements whilst the forward-thinking cocktail menu is rooted around flavour and colour profiles with a minimal presentation. There is a semi-private area for 8 guests while Alba, a private room designed for intimate drinking, can accommodate 12.

Silverleaf's breathtaking interior design combined with an expansive collection of rare and luxury international spirits, ensures guests will have a unique, unforgettable experience.







# Inspiring spaces



## Meeting Place

Meeting Place on the fifth floor consists of five adaptable meeting rooms, named after coaching inns that once graced Bishopsgate in the mid-1400s. Each room is equipped with integrated technology, including 4K LED screens and video conferencing facilities. The entire floor is also available for exclusive hire. Guests can additionally benefit from our Meeting Connoisseurs who are available to assist with all of your needs on the day of your event.



# Market Square

Market Square is a relaxed creative meeting space on level three, consisting of four meeting rooms named after local London markets within the Market Mile. Each room is equipped with access to the latest technology, including 4K LED screens and video conferencing facilities. The central breakout space, known as Market Kitchen, is well-stocked with snacks and drinks - giving you flexibility and choice to help yourself throughout the day. This floor is hired exclusively to provide you with privacy.



BRICK LANE

---

# Pacific Ballroom

Our Pacific Ballroom presents an impressive space for exclusive events, weddings, product launches and conferences.

Accommodating up to 400 guests theatre style and with a private Pavilion Entrance leading directly from the Plaza through the Pavilion, the ballroom features a state-of-the-art audio, visual and lighting equipment to enhance all events, to offer the most technologically advanced ballroom in the City of London.

The venue can also be split into two separate soundproofed rooms, perfect for a conference needing a breakout or exhibition space.







## Event Emporium

Tailoring everything to individual tastes, the Event Emporium is an immersive service that enhances important occasions into sensory experiences.

Whether a fairy-tale wedding or motivating conference, absolutely no detail is spared during inspirational one-on-one sessions with our dedicated Connoisseurs. From the softness of the linen to the curation of personalised menus and the scent of the room, there are no limits other than your imagination.

Here, creativity and collaboration combine for bespoke experiences that don't just meet discerning expectations, but exceed them.

## THE WELLBEING FLOOR





# Wellbeing

Focus on mind and body with our world-class wellness destination across an entire floor. Home to the most technologically advanced hotel gym in London, our wellbeing floor is dedicated exclusively to holistic health.

Tailored to individual needs, our facilities include a signature infinity pool with inspiring views over Bishopsgate Plaza and an interactive gym with cutting-edge equipment, alongside two indulgent treatment rooms, individual relaxation pods, sauna and steam rooms, a unique mindful studio and dedicated drawing room with nutritional dining.

Here, a truly personalised approach to wellbeing is practised, with everything from treatments to customised exercise routines overseen by our expert team of health professionals who are on hand to help guests achieve their specific goals.



---

# Sustainability

We are deeply mindful of our ecological footprint and are committed to responsible environmental practices in all areas of the hotel to champion best practice.

The culinary team source 95% of ingredients locally within the UK ensuring our carbon footprint is kept low, whilst all chefs' uniforms have been made entirely from recycled plastic bottles. The hotel is a "Clean Conscience" partner significantly reducing the amount of our waste.

Our roof is home to a mix of 42 native wildflowers that have been planted above the structure's tallest point, to create a sense of continuity between the hotel tower and the outdoor public spaces on the ground floor.

Please visit our website to be in-the-know of ongoing initiatives that we continually implement across the hotel.







Green roofs not only encourage urban biodiversity but they can cut carbon emissions from energy use by improving building insulation, reducing local flood risks and enhancing air quality.

PLP ARCHITECTS  
Architects for Pan Pacific London







SHOREDITCH  
HIGH STREET

SPITALFIELDS  
MARKET

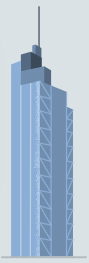
Moorgate

MOORGATE

LIVERPOOL  
STREET

PAN PACIFIC  
LONDON

Bishopsgate



SALESFORCE  
TOWER

Brick Lane



WHITECHAPEL  
GALLERY

ALDGATE  
EAST

ALDGATE

Leman St

THE  
GHERKIN



Minories

LONDON  
FENCHURCH  
STREET

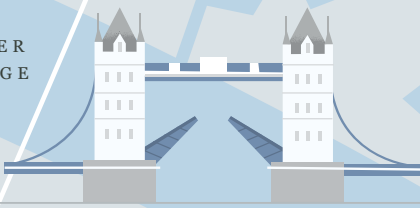
TOWER HILL



TOWER  
OF LONDON

ST KATHARINE  
DOCKS

TOWER  
BRIDGE



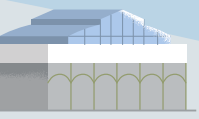
THE  
SHARD



LONDON  
BRIDGE

LONDON  
BRIDGE

river Thames



BOROUGH  
MARKET

Southwark St

BANK OF  
ENGLAND



BANK

CANNON  
STREET

MONUMENT



## Global Sales Offices

### SYDNEY, AUSTRALIA

150 Day Street  
Sydney, NSW 2000  
Australia  
Tel : +61 2 9260 3013  
Email : gsosydney@pphg.com

### BEIJING, CHINA

No.2 Hua Yuan Street,  
Xicheng District,  
Beijing, 100032 China  
Tel : +86 10 6623 9724  
Email : gsobeijing@pphg.com

### SHANGHAI, CHINA

Room 605, K.Wah Centre  
1010 Huai Hai Zhong Road Shanghai, 200030, China  
Tel : +86 21 6136 4127  
Email : gsoshanghai@pphg.com

### HONG KONG, CHINA

WeWork Tower 535  
Office 11019, Causeway Bay  
Hong Kong  
Tel : +852 3905 4688  
Email : gsohongkong@pphg.com

### TOKYO, JAPAN

13F Jingumae Tower Building,  
1-5-8 Jingumae, Shibuya-Ku,  
Tokyo, 150-0001 Japan  
Tel : +81 3 6741 7112  
Email : gsotokyo@pphg.com

### SINGAPORE

7500A Beach Road  
The Plaza, #03-301  
Singapore 199591  
Tel : +65 6808 1238  
Email : gsosingapore@pphg.com

### NEW YORK, USA

244 5th Avenue, Suite D-215  
New York, N.Y. 10001  
USA  
Tel : +1 973 288 1886  
Email : gsonewyork@pphg.com

### SAN FRANCISCO, USA

188 King Street, Suite 509  
San Francisco, CA 94107  
USA  
Tel : +1 415 732 5818  
Email : gsosanfrancisco@pphg.com

## Pan Pacific London

80 Houndsditch,  
London EC3A 7AB

+44 (0) 20 7118 6888

panpacificlondon.com

## GDS Codes

Sabre (AA) 387385  
Apollo / Galileo (UA) F9906  
Worldspan (1P) LHRPP  
Amadeus (1A) LONPPL

 @panpacificlondon

 @panpacificlondon



**PAN PACIFIC  
HOTELS GROUP**

A Member of UOL Group



**DISCOVERY** 